



Floorplan

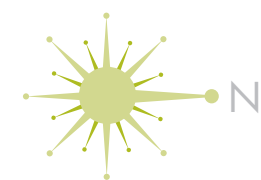
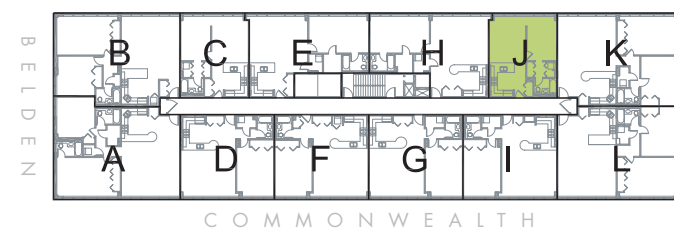
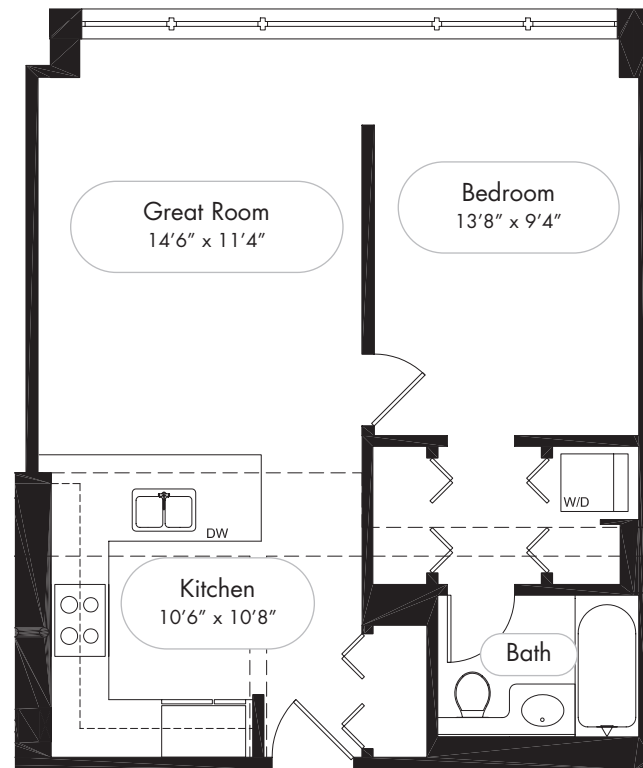
UNIT: J



2300 Commonwealth is exclusively marketed by Belgravia Realty Group, LLC	<i>Better built by design.</i> BELGRAVIA BELGRAVIA GROUP.COM
2300 Commonwealth is a development of Belgravia Group, Ltd. www.belgraviagroup.com	
For more information call Belgravia Realty Group at 773.549.3747	
Developer's License Number: 1578819	



Floorplan: Unit: J



All dimensions are approximate. Plans are not to scale. All plans and specifications are subject to change and revision without notice.

--- Indicates approximate soffit location

Unit Features



Kitchen

- ☒ Natural maple faced base and 42" high wall cabinets (except at soffits) by Aristokraft™
- ☒ Granite kitchen countertops with eat-in breakfast bar or integrated table
- ☒ Double bowl stainless steel sink with Kohler™ single control pull-out spout
- ☒ Surface mount halogen light fixture
- ☒ GE™ Stainless Steel appliance package:
 - 21.7 cu. ft. refrigerator with built-in ice maker
 - Self-cleaning gas range
 - Spacemaker™ Microwave oven with built-in exhaust
 - Potscrubber™ 5-cycle dishwasher
 - Continuous feed undersink garbage disposal

Interior Finishes

- ☒ Waterfall baseboard trim
- ☒ Prefinished wood floor in entry, hallway, kitchen, living/dining room
- ☒ Luxury wall-to-wall carpeting and pad in bedrooms
- ☒ Chrome finish door hardware throughout
- ☒ Abundance of closets in every unit
- ☒ White vinyl-coated wire and/or wood closet shelving
- ☒ Cable and internet ready outlets in all bedrooms and living area
- ☒ Telephone outlet in all bedrooms, kitchen, and living area
- ☒ Laundry closet with stackable washer and electric dryer

Bathrooms

- ☒ Halogen horizontal fixture above full view mirror
- ☒ Toiletry cabinets with mirror
- ☒ Raised height vanity with maple face by Aristokraft™ with marble top including a Kohler™ white vitreous undermount china bowl with Kohler™ faucet
- ☒ Tub/shower with single control faucet and Kohler™ showerhead
- ☒ Kohler™ toilet
- ☒ Marble tile floor, base, and tub/shower walls

Exterior Finishes

- ☒ Face brick, glass and painted concrete
- ☒ Interior roof drains
- ☒ Modified asphalt bitumen roof

Mechanicals

- ☒ In-slab central radiant heating system with individually controlled thermostat and actuator in each home, except in west units on the second floor where baseboard radiators are located
- ☒ 100 amp electric service
- ☒ Circuit breaker conveniently located in each unit
- ☒ Individual electric and gas meters
- ☒ Copper water lines throughout
- ☒ Common pump for water pressure
- ☒ Central gas fired hot water system
- ☒ Thru-wall air conditioner in all living rooms and bedrooms

Energy Efficiency

- ☒ New aluminum clad wood thermal-pane windows with screens
- ☒ Weather stripping on all exterior doors and windows

Building Amenities

- ☒ Two passenger elevators
- ☒ Common exercise room
- ☒ Business center
- ☒ Common roof deck with panoramic views
- ☒ Heated parking garage (additional charge for spaces)
- ☒ Designer lobby with enterphone system wired to unit telephone
- ☒ Trash chute on each floor
- ☒ Storage locker for each unit on ground floor
- ☒ Bicycle storage

